



**E. coli Host Cell Protein OneStep ELISA Kit, G3  
(Applicable to BL21 (DE3), TG1, W3110 and Derivatives)**

**48 Wells**

**Catalogue Number: EH-E0020-3C1-48T**

**ELISA Kit for the quantitative Measurement of E. coli HCP Residues  
in Cell Culture Supernatants, Protein Purification Process, and End-Product**

**FOR RESEARCH, DEVELOPMENT AND MANUFACTURING USE ONLY!**

**NOT FOR THERAPEUTIC OR DIAGNOSTIC APPLICATIONS!**

**PLEASE READ THROUGH ENTIRE PROCEDURE BEFORE BEGINNING!**



## CONTENTS

<b>1. BACKGROUND</b> .....	<b>3</b>
<b>2. PRINCIPLE OF THE ASSAY</b> .....	<b>3</b>
<b>3. KITS' ADVANCEMENT</b> .....	<b>4</b>
<b>4. MATERIALS</b> .....	<b>4</b>
<b>5. EQUIPMENT REQUIRED BUT NOT PROVIDED</b> .....	<b>4</b>
<b>6. SPECIMEN COLLECTION AND STORAGE</b> .....	<b>5</b>
<b>7. REAGENT PREPARATION</b> .....	<b>5</b>
<b>8. ASSAY PROCEDURE</b> .....	<b>5</b>
<b>9. NOTES</b> .....	<b>8</b>
<b>10. CALCULATION OF RESULTS</b> .....	<b>9</b>
<b>11. QUALITY CONTROL</b> .....	<b>10</b>
<b>12. FAQs &amp; TROUBLESHOOTING</b> .....	<b>10</b>
<b>13. CONTACT US</b> .....	<b>10</b>



## 1. BACKGROUND

This kit is intended for the quantitative detection of host cell protein (HCP) residues in biopharmaceuticals produced by *E. coli* (BL21 (DE3), TG1, W3110 and Derivatives) expression systems.

As a commonly used expression system, *E. coli* produces target proteins while concomitantly triggering its own cellular apoptosis. According to data, the host proteins released into the culture medium after cell lysis number in the thousands, a large proportion of which exhibit strong immunogenicity. These proteins can induce adverse toxic or immune responses that compromise product safety and quality, thereby posing a risk of potential biological contamination. One of the core objectives of downstream processing in biopharmaceutical production is to eliminate these potential hazards.

Therefore, it is imperative to minimize the residual level of host cell proteins (HCPs). During the development of downstream purification processes, a scientifically sound method must be established for quantifying HCP concentrations in both finished and semi-finished products. Enzyme-linked immunosorbent assay (ELISA) boasts ultra-high sensitivity, and thus has been designated as the gold standard for HCP detection by domestic and international regulatory authorities including the FDA, EMA, NMPA and ICH.

## 2. PRINCIPLE OF THE ASSAY

This ELISA kit adopts to the solid phase sandwich Enzyme-Linked Immunosorbent Assay. The microplate has been pre-coated with capture antibodies to prepare solid-phase antibodies. The sample antigen and the HRP-conjugated detection antibodies are added simultaneously to the microplate wells, forming a capture antibody-antigen-detection antibody complex. After washing, the conjugates uninvolved in the reaction are removed, and then a TMB substrate solution is added to the wells to incubate. TMB substrate solution turns blue after the oxidation of HRP and finally turns yellow immediately after adding the stop solution. The color of the TMB substrate positively correlated with the antigen bound in the initial steps. Measure the absorbance (OD value) at 450nm



using a microplate reader, and create a standard curve along with the corresponding concentrations. Then, by inputting the OD values of the samples into the standard curve equation, calculate the concentration of the target protein in the sample.

### 3. KITS' ADVANCEMENT

- 1) **Broad Coverage:** The antibodies exhibit strong HCP recognition capability, attaining >80% coverage with reliable performance.
- 2) **High Antibody Titers:** The antibodies used in the reagent kit are tested using the indirect method with ELISA, and the results indicate a titer of at least  $10^6$ .
- 3) **High Sensitivity:** Serum antibody purification employs affinity purification to remove non-specific antibodies to the greatest extent.
- 4) **High Stability:** The production process uses a broad-spectrum protein stabilizer and microplate processing technology to enhancing the thermal stability and repeatability of the standard as well as repeatability of microplate result.
- 5) **Applicability:** The kit was evaluated under different reaction temperatures (20-30°C) and reaction time variations ( $\pm 10$  minutes), demonstrating excellent reproducibility of test results.
- 6) **Optimal Diluent Buffer:** Using an optimized dilution solution can reduce non-specific adsorption during the sample detection process, resulting in very low background coloration that facilitates the observation of the concentration of the samples.

### 4. MATERIALS (Note: Storage at 2-8°C)

	Reagents	Specification	Quantity
1	Pre-Coated Microplate (Detachable)	48 wells	1 plate (Keep Sealed)
2	Standard (Stock Solution) -500µg/mL	30µL	1 tube
3	Detection antibody (100×)	100µL	1 tube
4	TMB Substrates	10mL	1 vial (Avoid Light)
5	Stop Solution	10mL	1 vial
6	Wash Solution (20×)	10mL	5 vials



7	Diluent Buffer (10×)	10mL	1 vial
8	Plate Sealer		4 pieces
9	Instruction Manual		1

**5. EQUIPMENT REQUIRED BUT NOT PROVIDED**

- 1) 10-1000µL Pipettor
- 2) Multichannel Pipettor
- 3) 1L Sterilized Deionized Water or Ultrapure Water
- 4) Sterilized EP Tubes
- 5) Absorbent Paper
- 6) Microplate Reader
- 7) High-speed Centrifuge
- 8) Mini Centrifuge
- 9) Microplate Washer or Washing Bottles
- 10) Data Analysis and Graphing Software

**6. PREPARATION BEFORE ASSAY**

Please read the kit instruction manual carefully before use. All reactions are performed at room temperature (20-25°C; the same applies hereinafter).

**7. REAGENT PREPARATION**

- 1) Place all kits' components at room temperature for 30 minutes before using.
- 2) The preparation of Wash Solution (1×): Add the contents of five 10mL of Wash Solution (20×) into 950mL of deionized water or ultrapure water to prepare 1000mL of Wash Solution (1×). If crystals have formed in the concentrate, allow it to reach room temperature and mix gently until the crystals are completely dissolved.
- 3) The preparation of Diluent Buffer (1×): Dilute 10mL of Diluent Buffer (10×) with 90mL of deionized water or ultrapure water to prepare 100mL of Diluent Buffer (1×). If crystals have formed in the concentrate, warm to room temperature and mix gently until the crystals have completely dissolved. The buffer is used as the Diluent Buffer for standards, samples and

detection antibodies.

## 8. ASSAY PROCEDURE

1) Remove the microplate from the foil bag, detach the desired number of strips from the plate, immediately reseal the remaining strips and store at 4°C. Then put the ready-for-use strips on a clean microplate frame, and start the experiment after the strips returned to room temperature (Note: The microplate frame can be reused). The standard may stick to the tube wall due to transport turbulence. Before use, gently shake it or centrifuge for about 2 seconds.

2) Prepare Standards: When preparing the standards, label 8 tubes IS0, S1-S7 and add a certain volume of Diluent Buffer (1×): IS0 (48μL), S1 (495μL), S2 to S5 (each 250μL), S6 to S7 (each 300μL).

① Add 2μL of Standard (Stock Solution - 500μg/mL) into the IS0. Mix gently by pipetting up and down twice, then invert to mix thoroughly.

**(All subsequent mixing steps should be performed in the same manner—do not vortex or use any vigorous mixing method.)**

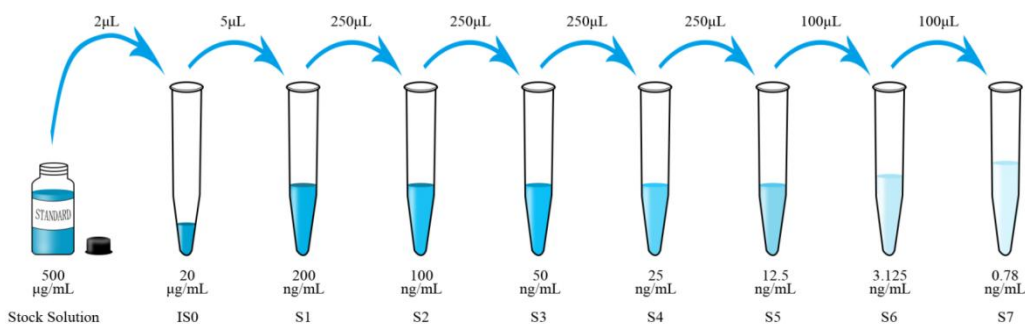
② Transfer 5μL of the resulting IS0 (20μg/mL) to the tube S1. Mix gently by pipetting up and down twice, then invert to mix thoroughly..

③ Transfer 250μL of S1 (200ng/mL) to S2, mix gently; then transfer 250μL of the resulting S2 solution (100ng/mL) to S3, mix gently. Continue this 2-fold serial dilution sequentially through S5 (12.5 ng/mL).

④ Transfer 100μL of S5 (12.5μg/mL) to the tube S6. Mix gently by pipetting up and down twice, then invert to mix thoroughly.

⑤ Transfer 100μL of S6 (3.125μg/mL) to the tube to achieve a final concentration of S7(0.78ng/mL). Mix gently by pipetting up and down twice, then invert to mix thoroughly.

**NOTE:** There are 7 points of diluted standards, S1: 200ng/mL, S2: 100ng/mL, S3: 50ng/mL, S4: 25ng/mL, S5: 12.5ng/mL, S6: 3.125ng/mL, S7: 0.78ng/mL.





- 3) Prepare Detection Antibody (1×) : Dilute 60μL of Detection antibody (100×) to its working concentration (1×) with 6mL Diluent Buffer and mix gently.
  - 4) Sample Addition: Add 50μL of standards or test samples and 100μL Detection Antibody (1×) to the microplate wells. For the Blank Control, add 50μL of Sample Diluent and 100μL Detection Antibody (1×).
  - 5) Cover the plate with sealer, put it on the oscillator to mix and incubate for 2 hours at room temperature.
  - 6) Automated Washing:
    - Put 1000mL Wash Solution (1×) into the washing bottle of the automated microplate washer for standby.
    - Take out the microplate, and discard the incubation mixture. And then wash the microplate with the automated microplate washer for 5 times.
    - After washing, invert plate and blot dry by hitting the plate onto absorbent paper or paper towels until there is no moisture appears.
- Or Manual Washing:
- Put 1000mL Wash Solution (1×) into the washing bottle for standby.
  - Take out the microplate, and discard the incubation mixture. And then invert plate and blot dry by hitting the plate onto absorbent paper or paper towels until there is no moisture appears.
  - Fill each well with 300μL Wash Solution (1×) by a multi-channel pipette, let stand for 20 seconds, then discard the contents, invert plate, and blot dry by hitting the plate onto absorbent paper. Repeat this washing step for 5 times. Note: There should be no moisture appears in the fifth washing step.
- 7) Add 100μL TMB substrate to each well. Cover the plate with a sealer, incubate at room temperature for about 15 minutes. If the color is light, the reaction time can be extended



appropriately, but not more than 30 minutes.

- 8) Add 50 $\mu$ L of Stop Solution to each well to stop the reaction.
- 9) Run the microplate reader and conduct measurement at 450nm.
- 10) Data analysis: Four parameter curve fitting is recommended.

## 9. NOTES

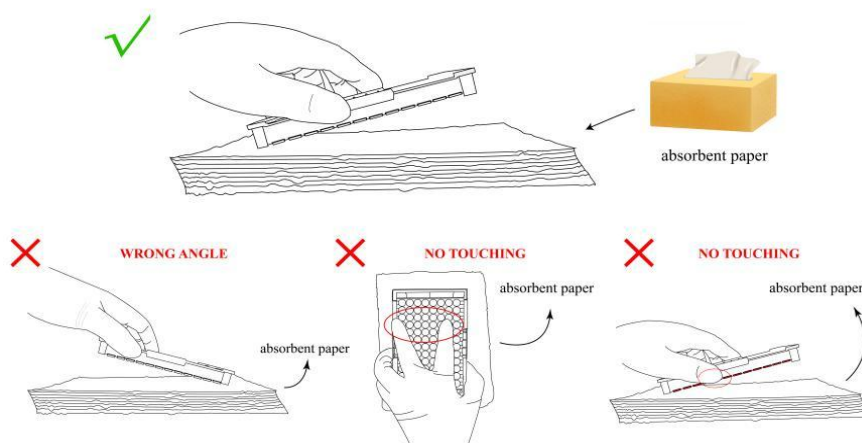
### 1) Sample Preparation

- a) After collection, the samples should be aliquoted and stored at -20°C (less than 3 months) or -80°C (less than 6 months) to maintain protein activity, avoid contamination and multiple freeze-thaw cycles. If samples are to be run within 24 hours, they may be stored at 2- 8°C.
- b) Ensure the frozen samples are completely thawed before use (do not thaw by heating). Mix thoroughly using a pipette or vortex mixer. If precipitates are present in the sample, they may interfere with the ELISA results; centrifugation is recommended to remove the precipitates.
- c) Some chemical solvents may interfere with this experiment, such as SDS, Triton, etc.
- d) It is recommended that all standards and samples be run in duplicate. Please gently mix the liquid after adding standards and samples, and confirm there's no bubble inside.
- e) The process of protein purification is often accompanied by complex buffer solutions. To exclude matrix effect, it is recommended to perform spike recovery test when using different buffers for the first time. High salt, low PH, polysaccharide, organic solvents, and detergents can result in lower recovery rates. The common practice is to Prepare the mixture by combining the diluted standard S1 (200 ng/mL) with the test solution matrix at a 1:1 volume ratio (e.g., 50  $\mu$ L of test solution plus 50  $\mu$ L of diluent either with or without 200 ng/mL standard S1). To calculate the spike recovery rate, subtract the background concentration (measured from the unspiked control) from the spiked sample concentration, then divide the result by the theoretical spiked concentration.

### 2) Experimental Operation

- a) Do not mix or interchange different ELISA kits or same ELISA kit but with different lot.

- b) To avoid cross-contamination, use disposable sterilized tips during the experiment.
- c) Total dispensing time for addition of reagents or samples to the plate should not exceed 10 minutes. If there are too many samples, a multichannel pipettor is recommended.
- d) Incomplete washing will adversely affect the test outcome. All washing must be performed with Wash Solution provided. All residual wash liquid must be drained from the wells by efficient aspiration or by decantation followed by tapping the plate forcefully on absorbent paper. Never insert absorbent paper directly into the wells. Do not directly touch the bottom of the microplate. If it is covered with fingerprints or stains, it will affect the measurement.
- e) TMB is easily contaminated. Please protect it from light and metal.
- f) Monitor the reaction time. After adding TMB substrate, observe the color change of reaction wells at regular intervals (for example, about 10 minutes). If the color turns too deep, add Stop Solution in advance to terminate the reaction.
- g) The Stop Solution provided with this kit is diluted sulfuric acid. Protective gloves, clothes, and face protection should be worn.
- h) The coefficient of determination of the standard curve should be  $R^2 \geq 0.95$ .
- i) Schematic diagram of tapping the plate:



## 10. CALCULATION OF RESULTS

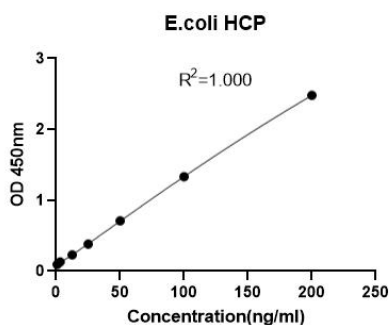
- 1) Average the duplicate readings for each standard and sample.
- 2) Construct a standard curve by plotting the average O.D. for each standard on the vertical (Y) axis against the concentration on the horizontal (X) axis, and generate a four parameter logistic



(4-PL) curve-fit.

- 3) Calculate the concentration of samples corresponding to the mean absorbance from the standard curve.
- 4) Standard curve is for demonstration only.

### APPENDIX 1: EXAMPLE OF STANDARD CURVE



	ng/mL	OD450
S1	200	2.481
S2	100	1.333
S3	50	0.711
S4	25	0.383
S5	12.5	0.231
S6	3.125	0.130
S7	0.78	0.095

## 11. QUALITY CONTROL

1) Intra Variation%: 5-10

Inter Variation%:6-10

2) Sensitivity:

LOD: 0.78 ng/mL

LOQ: 0.78 ng/mL

3) Specificity:

Sample	Concentration
HEK293 HCP	Not Detectable
CHO HCP	Not Detectable
<i>Saccharomyces cerevisiae</i>	Not Detectable
<i>Ogataea polymorpha</i> HCP	Not Detectable
<i>Pichia Pastoris</i> HCP	Not Detectable

## 12. FAQs & TROUBLESHOOTING

If the experimental results are abnormal, promptly take photos to record the color development results, fully retain the unused strips and reagents, and contact technical support. In addition, you



may refer to the troubleshooting information provided below to identify the root cause of the problem.

<b>Problem Description</b>	<b>Possible Causes</b>	<b>Corresponding Solutions</b>
Poor Standard Curve	Incorrect dilution of standards	Dilute the standard curve according to the specified ratio.
	Inaccurate pipetting or sample loading	Check the pipette and pipette tips.
	Incomplete washing of the microplate	Ensure the required number of washing cycles and the volume of washing solution per well.
Weak or Absent Color Development	Insufficient incubation time	Ensure adequate incubation time.
	Incorrect experimental temperature	Use the recommended incubation temperature.
	Insufficient reagent volume or missing addition	Check the pipetting and sample loading process to ensure all reagents are added in sequence with sufficient volume.
	Substrate solution not equilibrated to room temperature	Allow the TMB substrate to stand at room temperature for more than 30 minutes before color development.
Low OD Value Reading	Incorrect microplate reader settings	Verify the wavelength and filter configuration on the microplate reader. Preheat the microplate reader in advance before reading.
High Coefficient of Variation (CV)	Incorrect sample loading	Check the sample loading operation.
	Contamination on the microplate bottom	Inspect the microplate bottom for residual liquid and fingerprints.
	Foreign objects or air bubbles in wells	Confirm no foreign objects in wells before sample loading and no air bubbles after loading.
	Unsealed or incompletely sealed plate during	Seal the plate with plate sealing film.



	incubation	
High Background Value	Incomplete washing of the microplate	Wash the plate according to the method recommended in the instruction manual.
		If using an automated plate washer, check for clogs in all liquid inlets and waste outlets.
		For manual washing, appropriately increase the number of washing cycles.
		Inadequate or missed washing will result in high background.
	Incorrect incubation time or temperature	Operate strictly in accordance with the instruction manual.
	Contaminated consumables	Ensure the tubes, pipette tips and other consumables are clean.
Contaminated washing solution	Prepare fresh washing solution.	
Contaminated substrate solution	The substrate solution is inherently colorless. Ensure the substrate is not contaminated by metal ions or oxidizing agents before use and store it away from light.	
Low Sensitivity	Improper kit storage	Store all relevant reagents according to the requirements in the instruction manual.

### 13. CONTACT US

**Address:** Building 6, Lane 889, Ziping Road, Zhoupu Town, Pudong New Area, Shanghai, China

**Website:** [www.bluegene.cc](http://www.bluegene.cc) [www.elisakit.cc](http://www.elisakit.cc)

**Tel:** 400-882-6373/021--61106433/021--61106434/021-61106435/021--61106436

International Marketing Department:		
America	Tina	<a href="mailto:americas@bluegene.cc">americas@bluegene.cc</a>
America	Luyuan	<a href="mailto:luyuan@bluegene.cc">luyuan@bluegene.cc</a>
Asia &Australia	Diana	<a href="mailto:asia@bluegene.cc">asia@bluegene.cc</a>



---

Europe & Africa	Raina	europe-raina@bluegene.cc
Others	Cheng	sales@bluegene.cc
Technical Support Department:		
Menan		tech@bluegene.cc